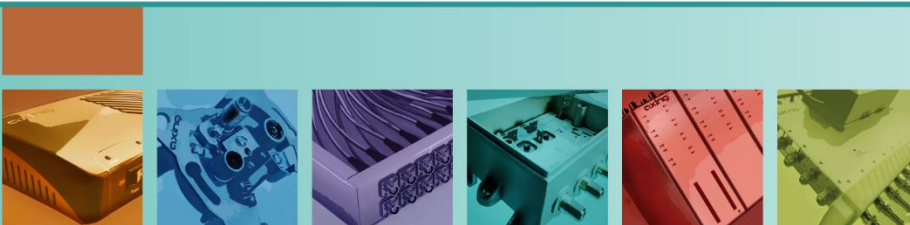


# HoE 1-04

## Cloud Media Player Single

### Operating instructions



# Table of contents

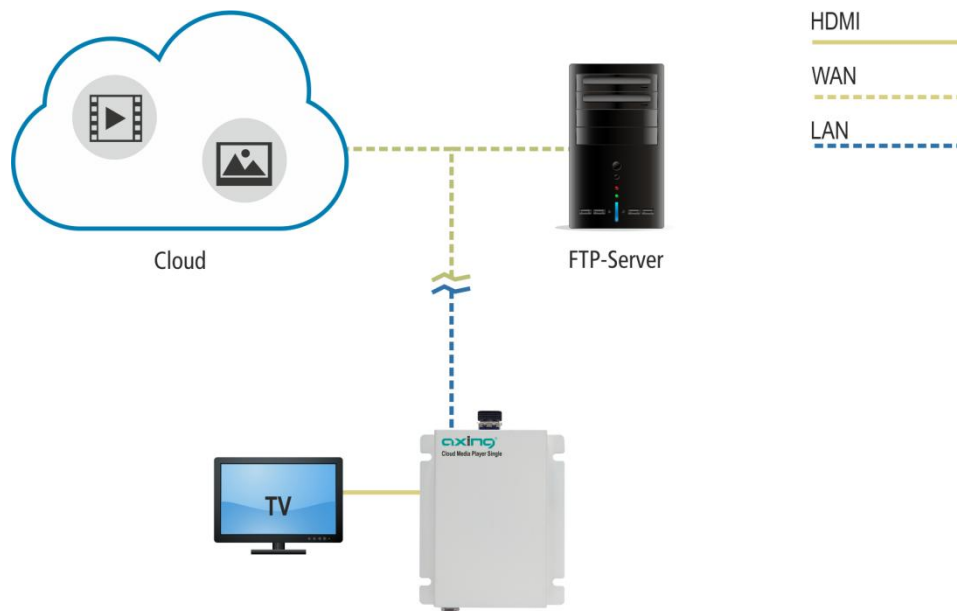
- 1. Product description ..... 4
- 2. Functions..... 5
- 3. Application scenarios ..... 6
  - 3.1.1. FTP services via the Internet..... 6
- 4. Mounting ..... 7
- 5. Installation ..... 8
- 6. Configuration ..... 9
  - 6.1.1. Network settings ..... 9
  - 6.1.2. Web interface ..... 10
  - 6.1.3. FTP settings ..... 10
  - 6.1.4. Other settings..... 13
  - 6.1.5. Maintenance ..... 15
- 7. Troubleshooting ..... 18
- 8. Technical data ..... 19

## Safety instructions:

- The installation of the device and repair work on the device must be carried out only by a professional in accordance with the applicable VDE directives. In case of incorrect installation, no liability is assumed.
- Never open the device. There are no parts to be maintained by the user inside the device, however, lethal voltages are present. This also applies to cleaning the device or working on the connections.
- Use only the mains cable connected to the device or the enclosed power supply unit. Never replace any parts or make any modifications to the mains cable and the power supply unit. Otherwise, there is a risk of death.
- If a replaceable fuse is available, pull out the mains plug before replacing the fuse. Replace defective fuses only by standardized fuses with the same nominal value.
- If you intend not to use the device for a longer period of time, we recommend you to completely disconnect the device from the mains for safety reasons and for saving energy by pulling out the mains plug.
- Let the device adjust to the room temperature before commissioning, in particular if condensation is present on the device, or if it was exposed to large temperature fluctuations.
- The device must be operated only in moderate climate.
- The device must be operated only in dry rooms. In damp rooms or outdoors, there is a risk of short-circuits (attention: risk of fire) or electrical shocks (attention: risk of death).
- Plan the mounting or installation location such that you can easily reach the mains plug and interrupt the electric circuit in dangerous situations. Select the mounting or installation location such that children cannot play near the device and its connections without supervision. The mounting or installation location must allow a safe installation of all connected cables. Power supply cables and supply cables must not be damaged or squeezed by any objects.
- Select a mounting or installation location which meets the requirements of the IP 54 protection class. Operate the device only on a flat, firm surface and protect it against unintentional movements.
- Never expose the device to direct solar irradiation and avoid direct vicinity of heat sources (e.g. heaters, other electrical appliances, fireplace, etc.). It must be always ensured that devices with cooling elements or ventilation slots are not covered or obstructed. In addition, ensure generous air circulation around the device. This will prevent possible damage to device and risk of fire due to overheating. It must be always ensured that cables are not located near heat sources (e.g. heaters, other electrical appliances, fireplace, etc.).
- The device is intended for transmission of audio and video signals via LAN cable. Misuse of the device is expressly prohibited.
- In particular, the warranty and liability shall be excluded for the consequences of incorrect use, in case of incorrect modifications or repair work carried out by the customer. Use the device only as described in the operating instructions and in particular according to the state-of-the-art.
- The requirements of the EC directives 2006/95/EC, 2004/108/EC, and 2011/65/EU are met.
- The product complies with the directives and standards for CE labeling.

## 1. Product description

The HoE 1-04 Cloud Media Player Single expands your IP network by a multimedia streaming playback device. The multimedia contents are played back in the highest possible quality. Thanks to the HDMI signal, high-resolution contents can be displayed on monitors, TV devices or projectors.



An external USB stick is used as storage medium for the multimedia contents. The advantage of this is that external devices (e.g. a PC) can also write on the stick.

The Samba server (Windows share) enables access to the USB stick in the network.

After the activation of the FTP synchronization, the data stored on the FTP server is synchronized with the data on the USB stick. The synchronization can be carried out with a server connected to the Internet (e.g. cloud) or to a local network.

A centralized management and automatic distribution of multimedia contents is equally provided as well as the updating of media contents according to a manually defined time pattern. Due to the incremental synchronization, where only the changes to the latest synchronization state have to be demanded, it is also possible to transfer large media contents even with slow Internet connections or VPN connections. For example, it is also possible to reproduce media depending on the time of the day by flexible synchronization settings.

As an alternative to the movies, images for slideshows can be also stored. The time interval for an image change can be defined individually. Still images are also possible.

All settings are made via the password-protected web interface without any additional software.

## 2. Functions

- FTP synchronization
  - Manual synchronization
  - Time-controlled synchronization
  - Interval-controlled synchronization
- SMB / CIFS / SAMBA / Windows share support
- Password-protected web interface
- USB stick (included in the scope of delivery)
- Updateable firmware
- Slideshow function
- HD & SD playback
- Intuitive user interface
- Remote configuration in VPN network possible



### 3. Application scenarios

Access to the user interface, Samba share, and connection to the FTP server is carried out via the "Media Input" Ethernet interface. It supports connections with up to 100Mbit/s.

#### 3.1.1. FTP services via the Internet

A FTP server with Internet access is accessible from any place. This allows you to make changes from any system at any time.

Due to the FTP synchronization, changes made from the central point will be adopted by all Media Players. Media contents can be distributed from a single location to a great number of various locations worldwide.

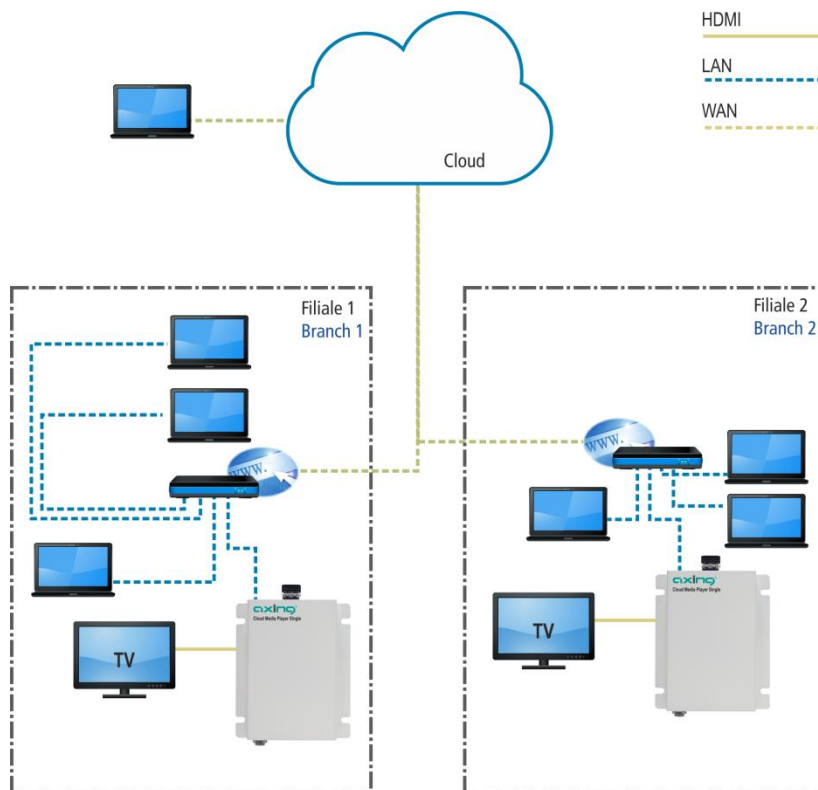
When selecting the model, consider data safety, system stability, and scalability. The best possible safety is achieved by access via a VPN connection.

#### FTP server

The File Transfer Protocol is a common protocol. Therefore, software for the FTP service can be usually installed on the common server systems and the storage space can be provided via the password-protected FTP accesses.

#### Cloud computing

In a cloud computing model, configurable storage systems, servers are available. Some of these on line services, depending on the service model (software as a service), offer password-protected FTP accesses to a dedicated memory.



The illustration shows the distribution of media by means of a cloud system.

## 4. Mounting

For the correct mounting, the following requirements must be met:

- The Media Player must be mounted only on a flat, vertical surface.
- To ensure that the heat produced in the device is sufficiently dissipated, the ventilation holes along the device must point upward and downward.
- The ventilation holes must not be covered or sealed.
- Only the four mounting holes must be used (1)!



- ➔ Mount the device on a flat surface as described above.
- ➔ Use four suitable screws for the four mounting holes (1). They are not included in the scope of delivery.

## 5. Installation

The Media Player has one network connection and one HDMI connector.

The network connection is used for establishing connection to an FTP server. The connection can be carried out locally or via the Internet.

The HDMI connector is directly connected to a monitor.

### **Power supply connection**

- ➔ First, establish the network connections and check whether the supplied USB stick has been connected to one of the two USB connections.
- ➔ Then, connect the supplied wall power supply to the DC 5V jack.
- ➔ After that, plug the wall power supply into the socket.
- ➔ The Power LED of the HoE 1-04 will light up.



## 6. Configuration

The device is configured via the graphical user interface. The network connection is used for making system settings, FTP configuration, and the maintenance.

### 6.1.1. Network settings

To access the corresponding user interface, a commercially available computer/laptop including network interface and the current version of the installed web browser is required. The network interface of the device is connected via a commercially available network cable.

The HTTP protocol is used for communication allowing a worldwide remote maintenance of the systems at various locations via the Internet. Access protection is implemented by means of the password prompt.

The connections are carried out via static IP addresses. The following values are preset ex-factory:

IP address:	192.168.0.130
Subnet mask:	255.255.255.0

The network connection of the computer must be in the same subnetwork as the network connection of the Cloud Media Player. The network part of the IP address must be identical to the subnet mask.

If the factory settings have not been changed, the computer network part of the IP address for the "Media Input" must be set to 192.168.0.xxx, and for the "Media Output" to "192.168.168.xxx". In both cases, the value for the subnet mask is 255.255.255.0.

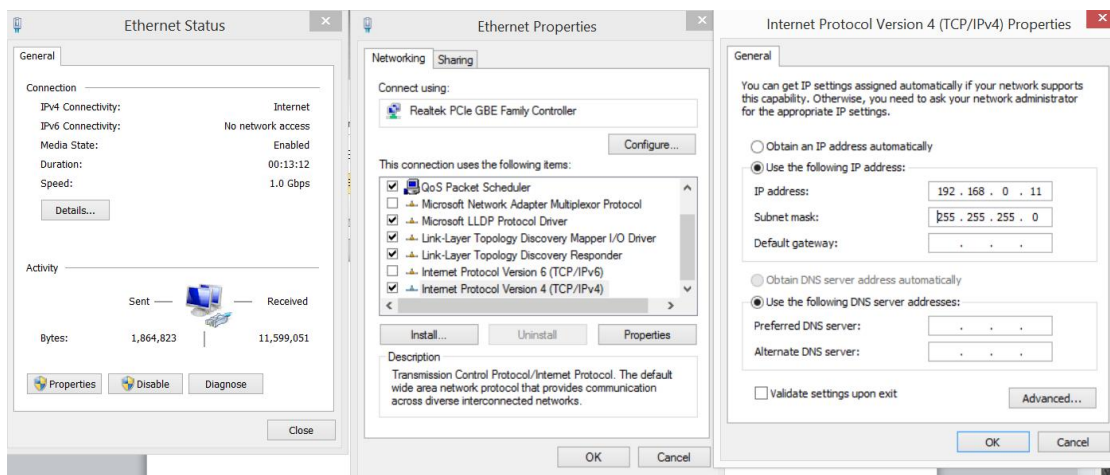
The host part of the network address (xxx) is required for the identification of the devices and can be assigned in the subnetwork only once. A host address between 0 and 255, which has not yet been assigned, can be allocated to the computer (e.g. 192.168.0.11).

The network settings of the computer must be made according to the instructions of the installed operating system.

**Example:** Configuration of the network connection of the computer for connecting the "Media Input" connection.

*Control panel > Network connections > LAN connection > Properties > Internet protocol version 4 TCP/IPv4 > Properties > Use the following IP address:*

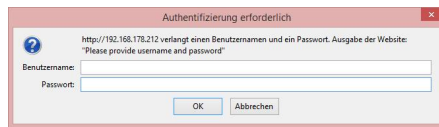
Computer IP address: 192.168.0.11 and Subnet mask: 255.255.255.0.



Press "OK" to apply the IP settings to the computer network interface.

## 6.1.2. Web interface

### Password entry



The access to the user interface is protected by user name and password prompt.

After the first log-on, the password should be changed as described in section 6.4.2 (User interface password).

Factory presetting:

Username: **admin** Password: **ax8262**

## 6.1.3. FTP settings

Video and image data intended for playback, can be received from a FTP server. The local folder on the USB stick is synchronized with the folder on the FTP server.

For synchronization, the device requires the address and the access data of the server. The synchronization can be carried out manually or automatically, at certain intervals or at a certain time of the day.

- **The image and video files are played back only if they are located in the "Video" folder in the main directory of the USB stick. It must be re-created if required. The folder name must be entered exactly regarding the upper and lower case.**
- **The file names must not contain spaces.**
- **If there are no files on the USB stick, the device will reboot every 10 minutes. After the start, the monitors display an information video with the note:**



**Please contact your administrator or manually save a video on the USB stick. In case of remote maintenance, the video is stored on the FTP server or on the cloud, and the synchronization is manually initiated under the "Automatic FTP Sync" menu item.**

## FTP Server Address

FTP SERVER ADDRESS

FTP server address:

SAVE ADDRESS

The FTP address of the cloud or the server, the complete path and the name of the folder to be synchronized are entered in the input window. Press "SAVE ADDRESS" to apply the changes.

## FTP account credentials

FTP ACCOUNT CREDENTIALS (MANDATORY)

Username:

Password:

SAVE USERNAME & PASSWORD

The FTP account credentials must be entered. Please pay attention to lower case and upper case.

If Anonymous FTP on the FTP server is enabled, the users can log on with the user name "anonymous" and any password. Press "SAVE USERNAME & PASSWORD" to apply the changes.

## Automatic FTP Synchronization

AUTOMATIC FTP SYNCHRONIZATION

Status (interval / time):  
automatic sync enabled (16:50)

⏻ **ENABLED**

A custom interval or a specific single synchronization time can be set instead of default 30 minutes synchronization interval.

Set custom interval   Set single sync time

Synchronise now:

**START SYNCHRONIZATION**

Check synchronization progress:

**CHECK SYNCHRONIZATION**

sync system ready

At the very top, the current status of the incremental FTP synchronization is indicated. The defined time interval or the time of the synchronization is displayed in brackets.

The first command button is used to enable ("ENABLED") or disable ("DISABLED") the automatic synchronization.

By default, the synchronization is carried out at an interval of 30 minutes. The interval can be changed in the "FTP SYNC INTERVAL" submenu.

To call the submenu, press "Set custom interval".

Alternatively, the time for synchronization can be entered in the "FTP SYNC TIME" submenu.

To call the submenu, press "Set single sync time".

Regardless of the defined settings, the synchronization can be manually started by pressing the "START SYNCHRONIZATION" button.

Press "CHECK SYNCHRONIZATION" to check whether a synchronization is carried out at the moment (sync in progress).

### FTP synchronization interval

FTP SYNCHRONIZATION INTERVAL

**DEFINE INTERVALS IN HOURS OR MINUTES:**

**HOURS**

Hours (1 - 23):

**MINUTES**

Minutes (1 - 59):

**SAVE INTERVAL**

(FTP synchronization interval)

The time interval can be entered in hours ("Hours") or minutes ("Minutes"). Select the radio buttons to enable the corresponding input fields. Press "SAVE INTERVAL" to apply the changes.

### FTP synchronization time

FTP SYNCHRONIZATION TIME (ONCE A DAY)

**DEFINE TIME FOR SYNCHRONIZATION:**

Use 24-hour clock system (e.g. 16:30).

:

**SAVE TIME**

(FTP synchronization time)

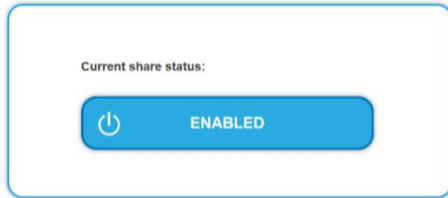
Use the input fields to define the time for the **synchronization once a day**.

Press "SAVE TIME" to apply the changes.

## 6.1.4. Other settings

### USB stick access via Windows share (SAMBA)

USB STICK ACCESS VIA WINDOWS-SHARE (SAMBA)



Press the button to enable or disable the USB stick access via Windows share. In delivery state, the Windows share is disabled.

The SAMBA share enables access to the USB stick.

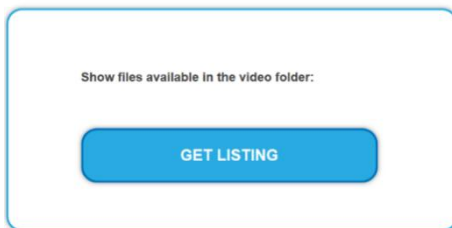
The access to the SAMBA share is carried out via the Windows Explorer or a corresponding SAMBA, SMB or CIFS client.

Enter two backslashes and the IP address of the device in the address field. For example: \\192.168.0.130.

**The access to the SAMBA server is not protected and allows the complete read and write access. Therefore, the access must be disabled as soon as it is no longer required.**

### Directory listing

DIRECTORY LISTING



Press the "GET LISTING" button to display the file listing of the "Video" folder. The folder is located in the main directory of the USB stick.

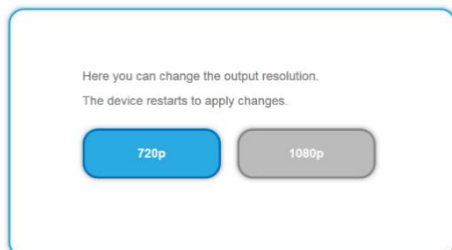
The files are listed in tabular form. The size, the time stamp, and the file name with the file extension are displayed.

The files may still be changed by the running synchronization processes or by the access via the SAMBA share.

If files are requested during these processes, note that the list of the files may contain not all files and the file attributes may differ from the final files.

### Resolution

RESOLUTION



For the playback, the 720p and 1080p resolutions are available.

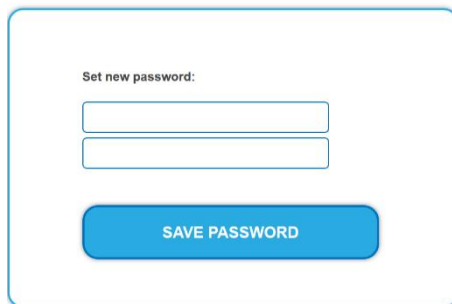
The current setting is highlighted in blue. In delivery state, the device is set to the 720p mode.

Press the corresponding button to enable the desired resolution.

The Media Player will reboot to apply the resolution changes.

## Web password

WEB-PASSWORD



Set new password:

SAVE PASSWORD

Use this function carefully as accidental or wrong entries are irreversible.

The password can only be composed of a continuous string of characters.

The new password for the user interface must be entered in both fields.

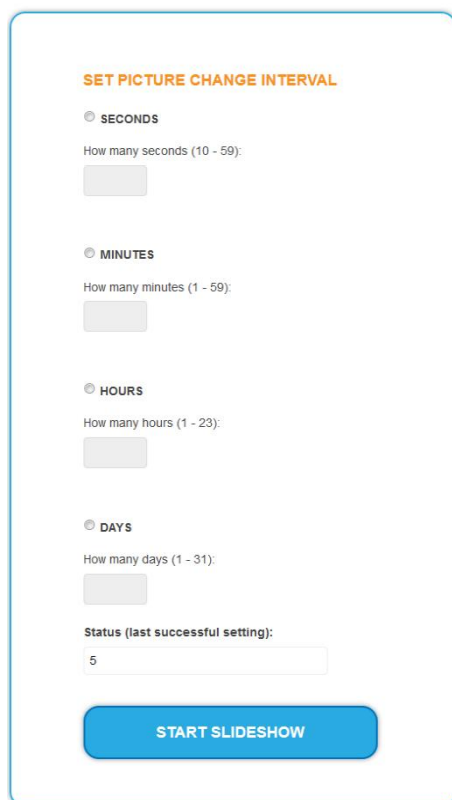
Press "SAVE PASSWORD" to confirm the entry.

If the entered passwords do not match, the message appears: "Your passwords do not match!". Enter the password in both field again.

If the entered passwords match, you will be prompted for confirmation "Are you sure you want to change your web-password?". Press "OK" to apply the new password to the user interface. The user interface can be accessed only by entering the new password.

## Slideshow

SLIDESHOW



SET PICTURE CHANGE INTERVAL

SECONDS  
How many seconds (10 - 59):

MINUTES  
How many minutes (1 - 59):

HOURS  
How many hours (1 - 23):

DAYS  
How many days (1 - 31):

Status (last successful setting):  
5

START SLIDESHOW

The images for the slideshow are stored in the same folder as the video files, i.e. on the USB stick in the "Video" folder.

The time interval for the automatic image change can be entered in various time units.

Select the radio button with the desired time unit to enable the corresponding input field.

Press "Start Slideshow" to apply the entered time interval and start the slideshow.

Prior to the first playback, the images are checked. This process can take up to 20 seconds.

During the slideshow, the screen is darkened when individual images are loaded. The loading time depends on the file size. For smooth image change and consistent quality, images with the same resolution and color depth are required.

To finish the slideshow, the device must be rebooted. To reboot, use the "Reboot" function.

## Reboot

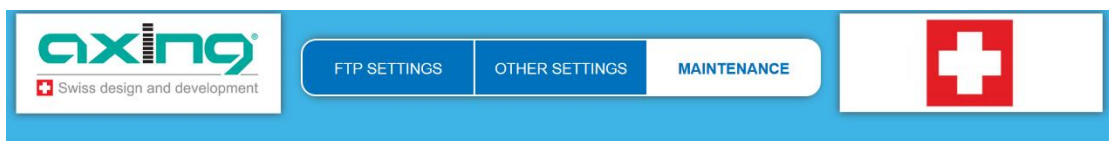
### REBOOT THE SYSTEM



Here, you can reboot the device by pressing "REBOOT". For installing certain software updates and finishing the slideshow, a manual reboot of the Media Player is required.

## 6.1.5. Maintenance

### System information



### SYSTEM INFORMATION

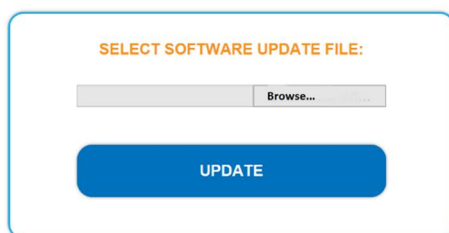
Software version: 1.50  
Serial number: 2398022273  
Temperature: 45.5°C (max. 85°C)  
Space used on usb disk: 2%

In the system information area, the installed software version, the serial number, the temperature of the device and the percentage of the space used on the connected USB stick are displayed.

The temperature must not exceed 85°C, and the temperatures above 60°C must be avoided if possible. If the device is operated in the upper temperature range, the temperature must be checked at regular intervals.

### Software update

### SOFTWARE UPDATE

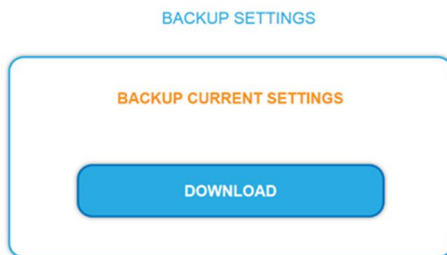


To update the software of the device, select the corresponding file (softa.zip) on a data carrier using the "Browse..." button and then press "Update".

This process can take up to 2 minutes. It is recommended to reboot the Media Player after the update.

The current software can be found on our website at [www.axing.com](http://www.axing.com) in the Download area.

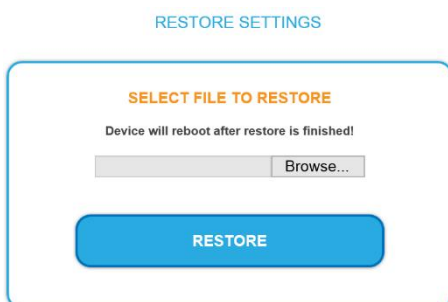
## Backup settings



The function allows backing up the settings you have made.

The current settings are saved in a configuration file. The "export.bin" configuration file is available for download.

## Restore settings



The settings are restored by importing settings from a configuration file.

Press the "Browse..." button to select the "export.bin" configuration file. Press the "Restore" button to apply settings from the selected file. The Media Player will reboot, and it will be accessible only via the IP address from the configuration file.

Use the same configuration file to copy the settings to other devices. If the devices are operated in the same network, the IP addresses must be changed. This prevents IP address conflicts.

## Factory defaults



Press the button to reset the Media Player to the delivery state. All settings will be lost.

The Media Player will reboot, and it will be accessible only via the default IP address 192.168.0.130.



## Time settings

TIME SETTINGS

(GMT+01:00)Amsterdam, Berlin, Bern, R+

Yr  Mon  Day

Hr  Min  Sec

In this area, the time zone is selected, and the date and time settings of the device are made.

The GMT time zone is selected from the entries of the selection list. Press "CHANGE TIME ZONE" to apply changes to the device.

If Internet connection is available, the time settings of the device are automatically synchronized with the time server. The update of the GMT time can take up to 10 minutes.

The input fields for date and time show the device settings at the moment when the web page was loaded. To call the current values, update the window in the browser (F5 key).

If the time server is not available, the date and time settings can be made manually.

Alternatively, the "Copy Computer Time" button can be used to copy the date and time settings of the computer into the input fields. Press "SET DATE & TIME" to apply the changes.

## Network settings

NETWORK SETTINGS

IP address:

Netmask:

Gateway:

**Use this function carefully as accidental or wrong entries are irreversible.**

In this area, the network settings for the "Media Input" connection are defined.

To apply changes to the IP address, netmask, and gateway address, press the "SAVE CHANGES" button. The process can take up to 30 seconds.

The device can be accessed via the new IP address.

## 7. Troubleshooting

### General information

- Check whether all cable connections are fitted tightly.
- Check whether the devices can be accessed with the set IP address via the web browser.
- If you cannot locate the problem and a network problem is present at the time, contact an experienced network technician.

### No video signal

- Check the cabling.
- Check whether videos in the "video" folder on the USB stick are available.
- Check whether the USB stick is formatted with the file system FAT16 / FAT32.

### Poor or bumpy video

- Check which video format your video files have.
- Please note that only formats listed in the "supported formats" are supported.

### No access to the user interface

- For testing purposes, use an alternative browser.
- Check the network connection (PING).

### The device restarts automatically again and again

- Please check whether video files are available and whether the data of the FTP server in the web interface have been correctly entered.

### The device does not start

- Check whether the power cable is connected correctly.
- Disconnect it and re-connect it after about 20 seconds.

### FTP sync status indicates that a synchronization process is running, but nothing has happened.

- Do you have a slow Internet connection? Is your FTP server accessible?
- Perhaps the last synchronization procedure has started, when the settings were still incorrect and now the process tries to synchronize taking the old settings into account.
- In order to solve the problem, try restarting your device.

### Video files are not synchronized

- Have you replaced the USB stick? Please note that only the USB stick provided by us is officially supported.

### I want to reproduce images, but only videos can be played

- Images must be present on the USB stick in the video folder.
- The slideshow must be manually configured and started via the webinterface. This mode is active until a restart of HoE 1-04 device.

### It is impossible to access any of the IP addresses

- Please contact our service for a factory reset.

## 8. Technical data

Supported formats / supported media	MPEG-TS (MPEG2 / MPEG Audio V1 Layer 2) 2,4 Mbps – 576p
	MPEG-4 (MPEG4 / AVC High L3.1 / AAC 2CH) 5,4 Mbps – 720p
	MPEG-4 (MPEG4 / AVC High L3.1 / AAC 2CH) 5,2 Mbps – 720p
	MPEG-4 (AVC High L4.1 / H.264 / AAC 6CH) – 8,5 Mbps – 800p
	MPEG-4 (AVC / QuickTime / Main@L4.0) 2,1 Mbps – 1080p
	AVI (MPEG-4 / DIVX5.0 / MP3) 1,5 Mbps – 720p
	AVI (MPEG-4 / XVID / PCM) 1,8 Mbps – 720p
	JPG (max. 10 MB – max. 65536x65536)
Default IP	192.168.0.130
Default Credentials	User: "admin" Password: "ax8262"
FTP-Settings	Anonymous FTP / with credentials
File access	Windows Share (SMB / CIFS) w/o credentials (falls aktiviert / if enabled)
Integrated memory	8 GB USB 2.0
Configuration interface	HTML– PHP /w CSS
Supported Filesystems	FAT16, FAT32
Video output	HDMI, HDCP 1.3
Ethernet	RJ45, 10/100 BaseTX half- and full-duplex
USB port	Version 2.0 (HDDs or other sticks not supported)
Operating voltage	5 VDC
Maximum power consumption	4,5 VA
Operating temperature	-5 - +35°C
Air humidity range	5 - 90% RH (nicht kondensierend / not condensing)
Dimensions (W×H×D)	119 x 90 x 28 mm
Weight	270g

